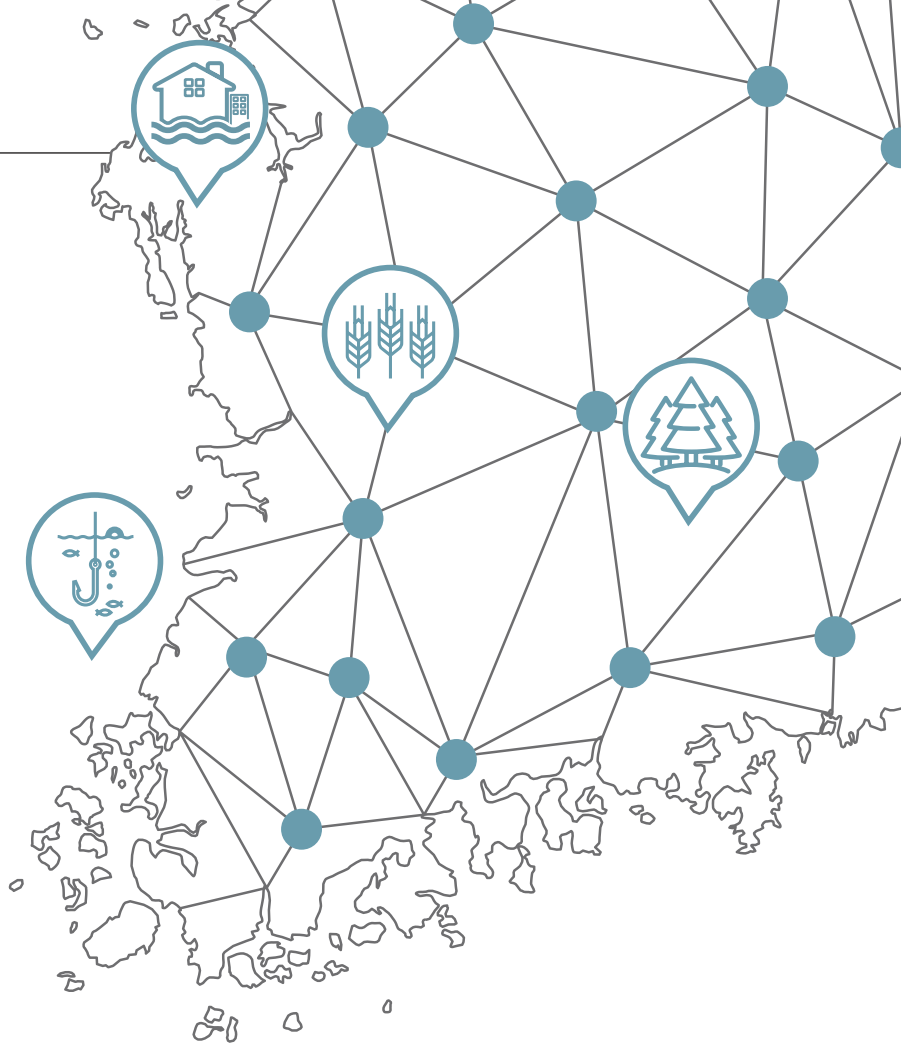


MOTIVE

Korean Model Of InTegrated Impact and Vulnerability Evaluation of Climate Change

MOTIVE is an integrated impact and vulnerability evaluation model that has been available since April 2021. It provides basic technologies for establishing realistic climate change adaptation plan for central and local governments.

<https://motive.kei.re.kr/>



Model of integrated impact and vulnerability evaluation of climate change: MOTIVE

- MOTIVE is a means of scientific and policy support to improve capabilities in national and regional responses to climate change
 - Provides risk assessment results through an integrated platform for evaluating climate change impact and vulnerability based on interactions among seven sectors (health, water management, agriculture, forestry, ecosystem, ocean, and fisheries)
 - Provides information on climate change risk standardization (grade, economic ripple effect), hotspots, and guidance on risk management by zone/region

The Contributions of MOTIVE



Realizing a climateready society

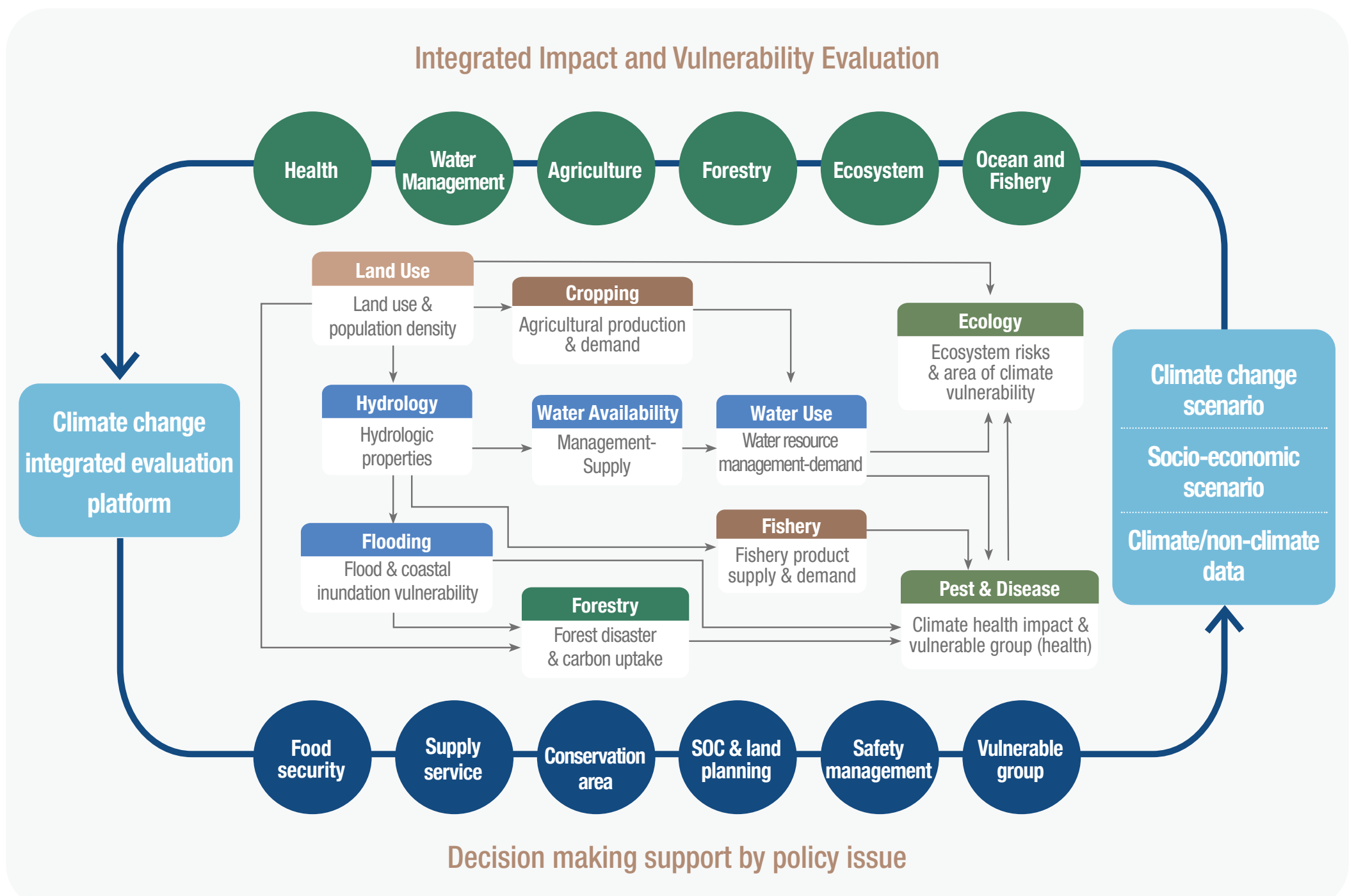


Determination of priority and core strategies for climate change adaptation

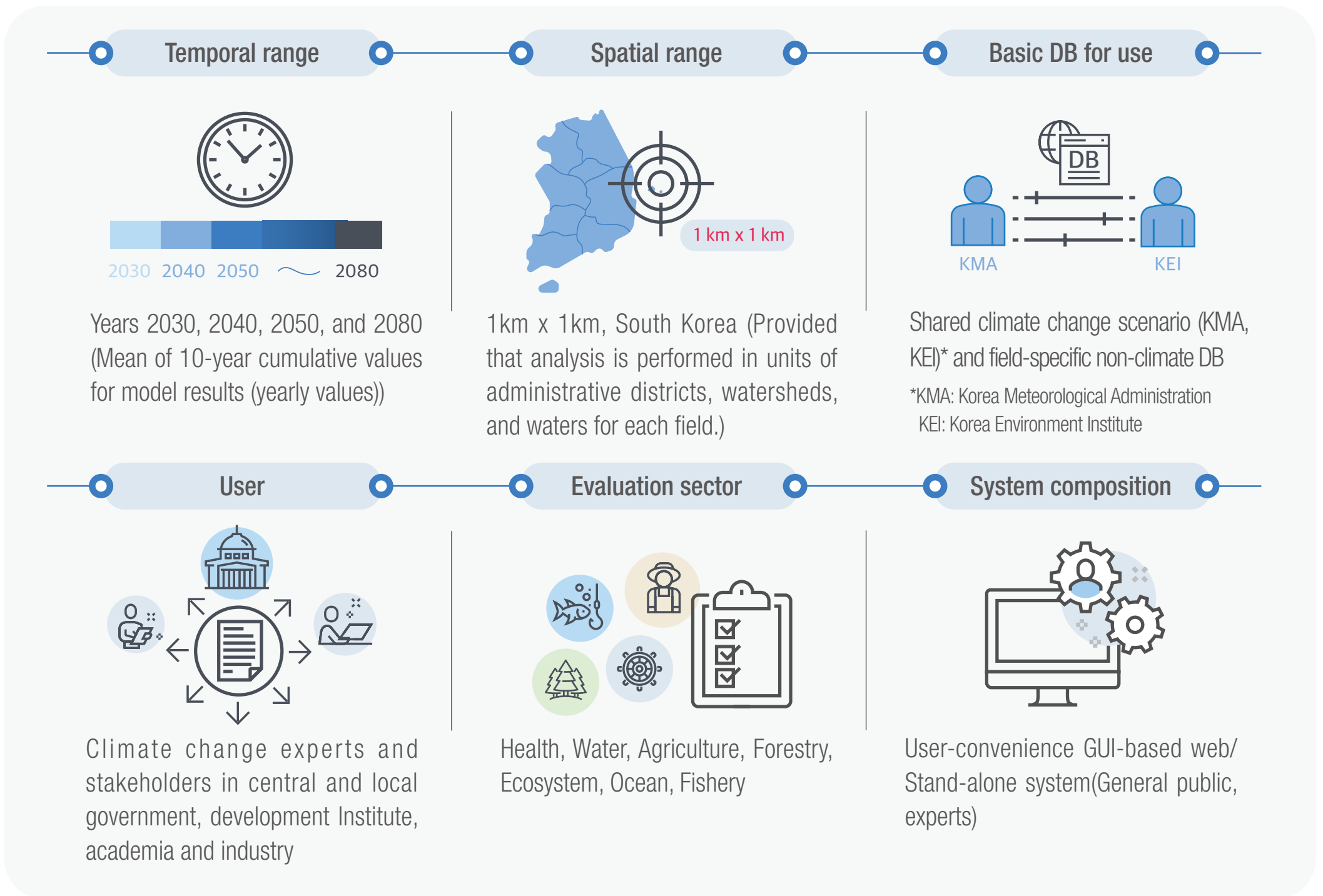


Inducing a virtuous cycle interlinking economy, society, and the environment

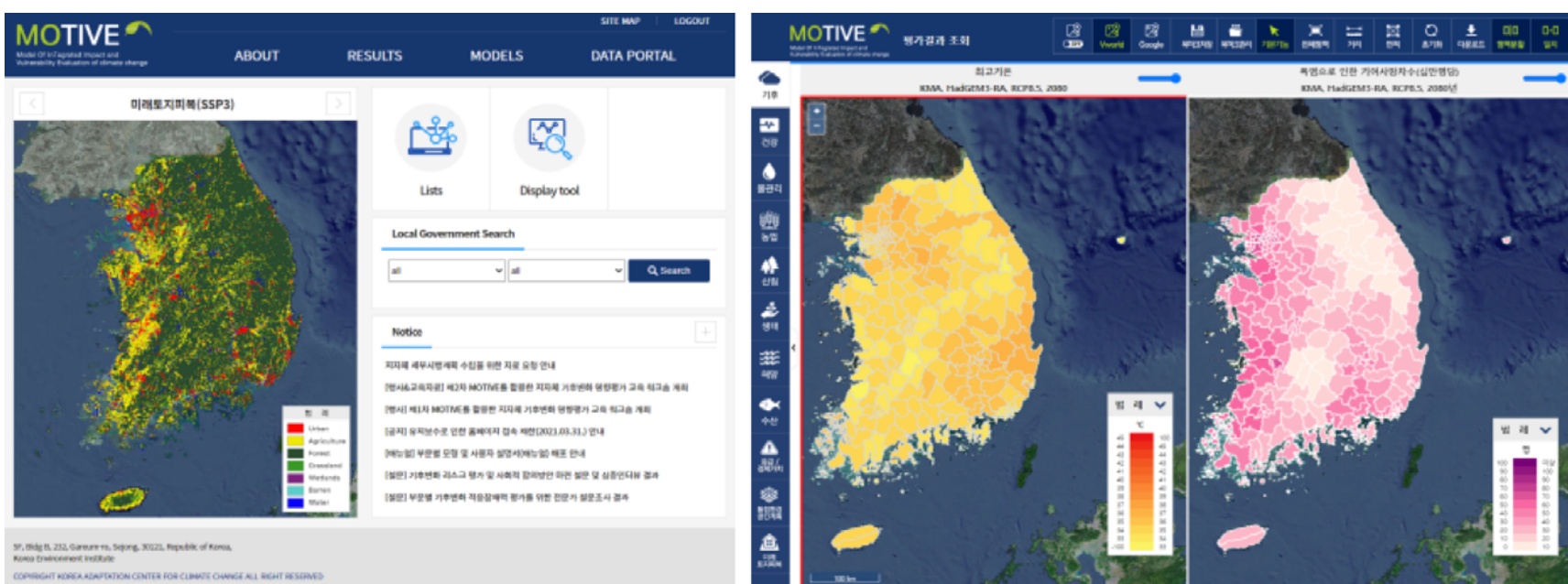
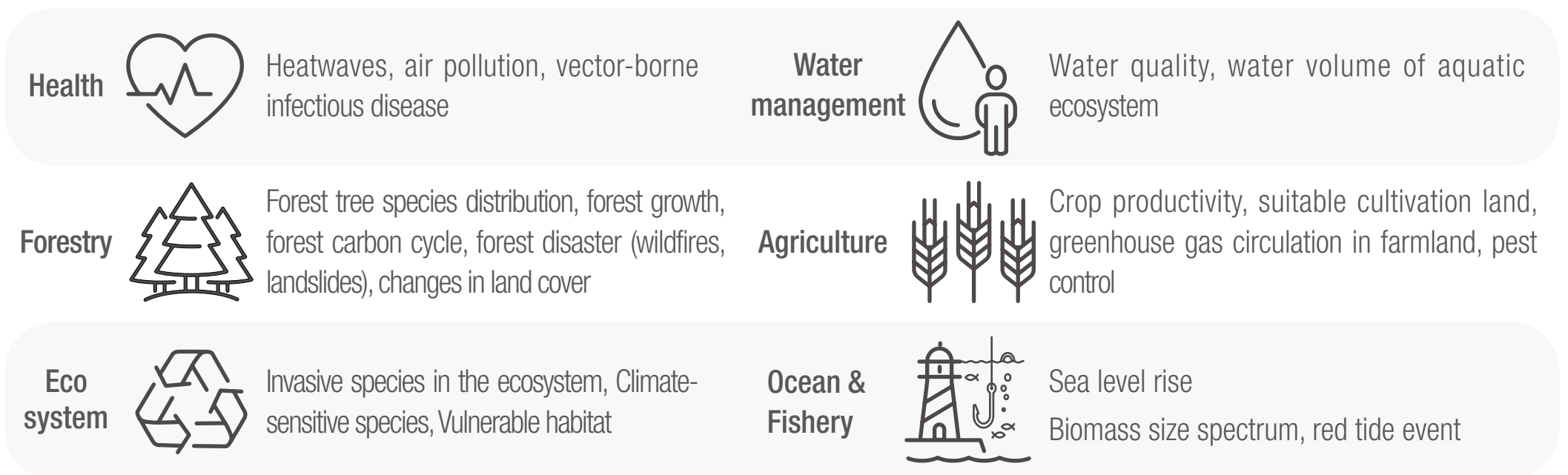
A Schematic Diagram of MOTIVE



Key features of MOTIVE



Evaluation items of impact by sector



MOTIVE system for supporting policy decisionmaking